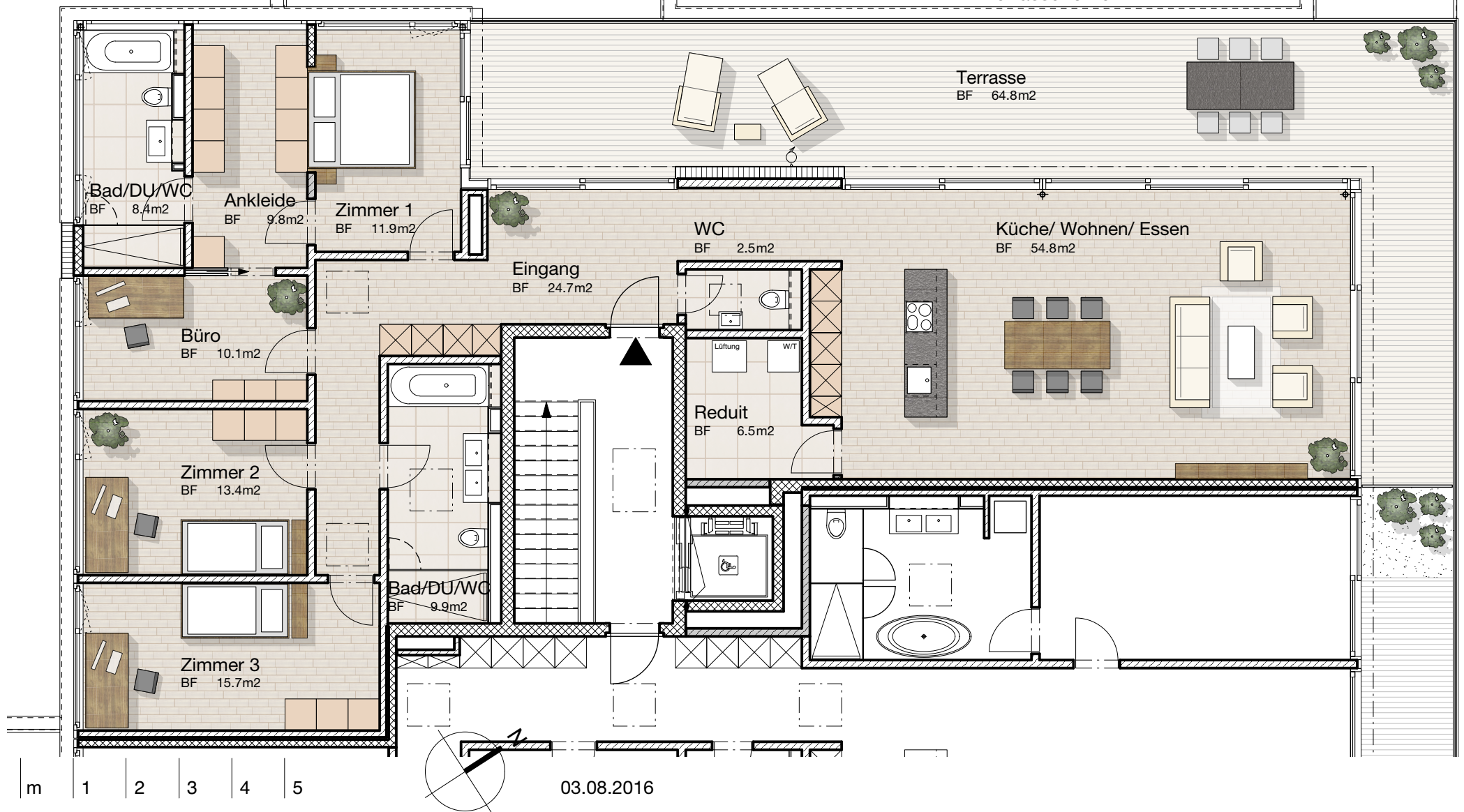
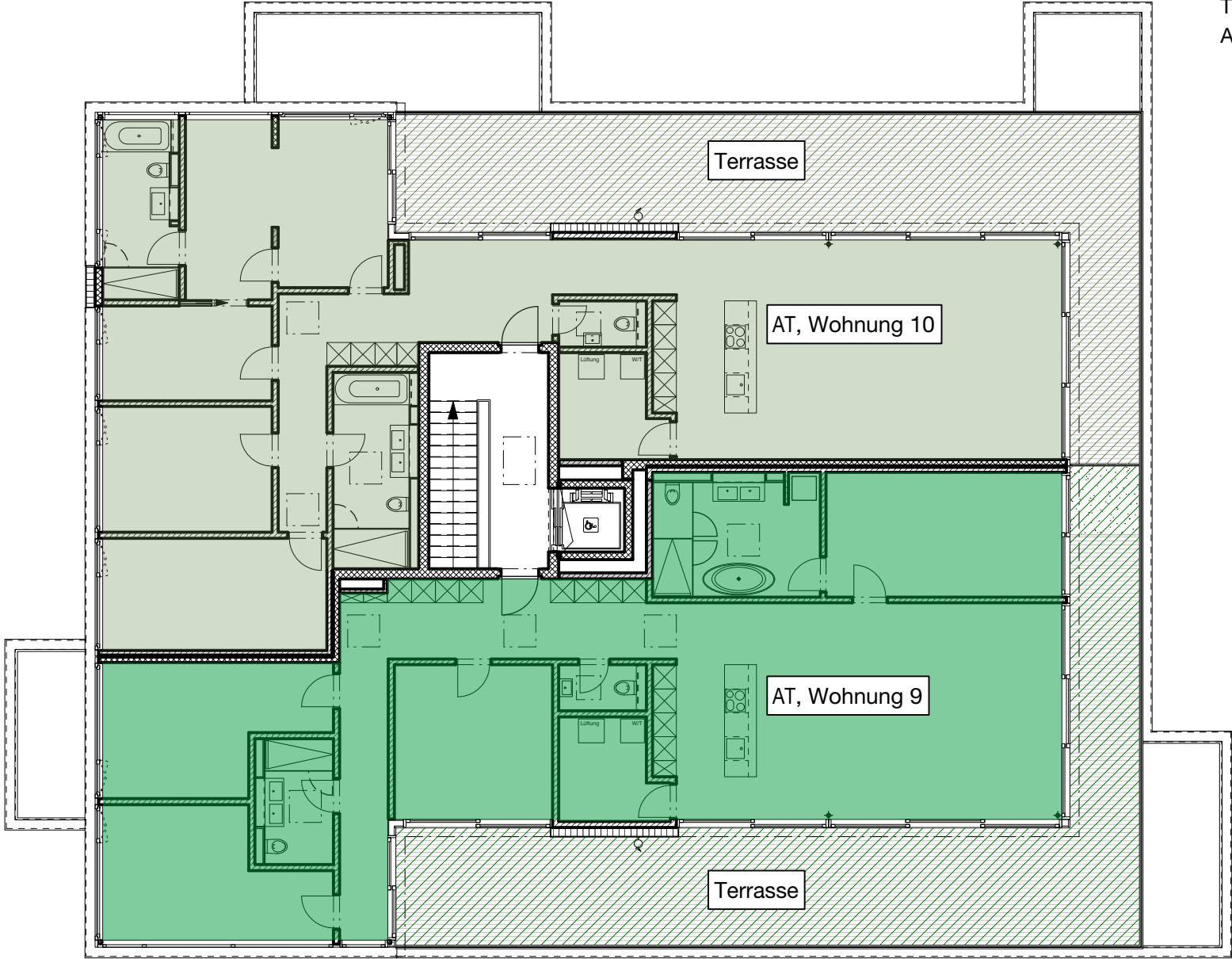




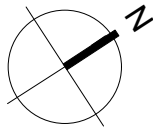
NEUBAU MFH TIEFENHOF
Tiefenhofstr. 18, Wädenswil
AT, WOHNUNG 10

5 1/2 Zimmer Wohnung
Bruttowohnfläche: 176.0 m²
Nettowoohnfläche: 167.5 m²
Terrasse: 64.5 m²





m | 1 | 2 | 3 | 4 | 5



03.08.2016