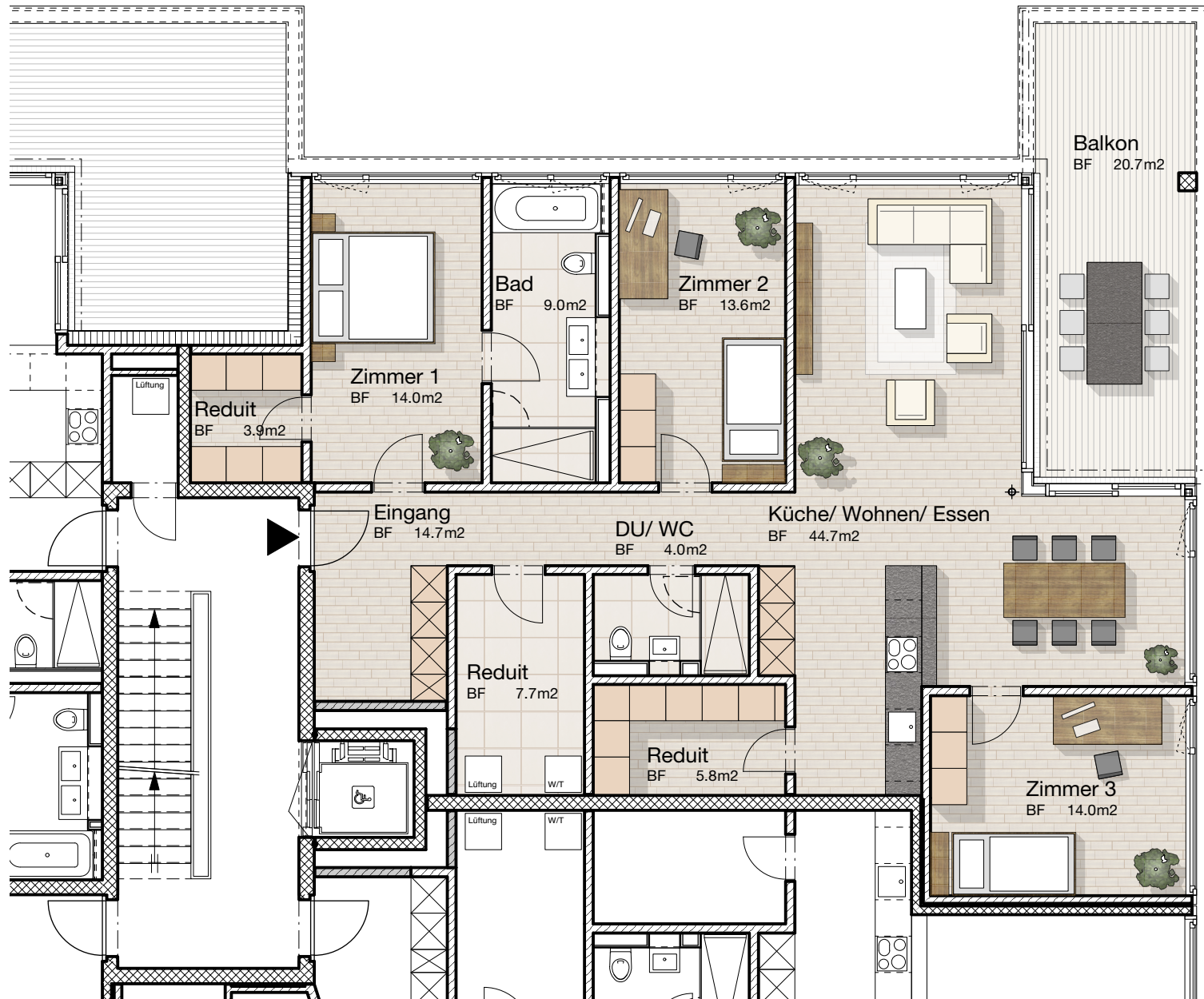
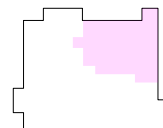
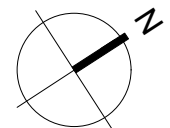


NEUBAU MFH TIEFENHOF
 Tiefenhofstr. 18, Wädenswil
 OG, WOHNUNG 8

4 1/2 Zimmer Wohnung
 Bruttowohnfläche: 139.5 m²
 Nettowohnfläche: 131.0 m²
 Balkonfläche: 20.5 m²

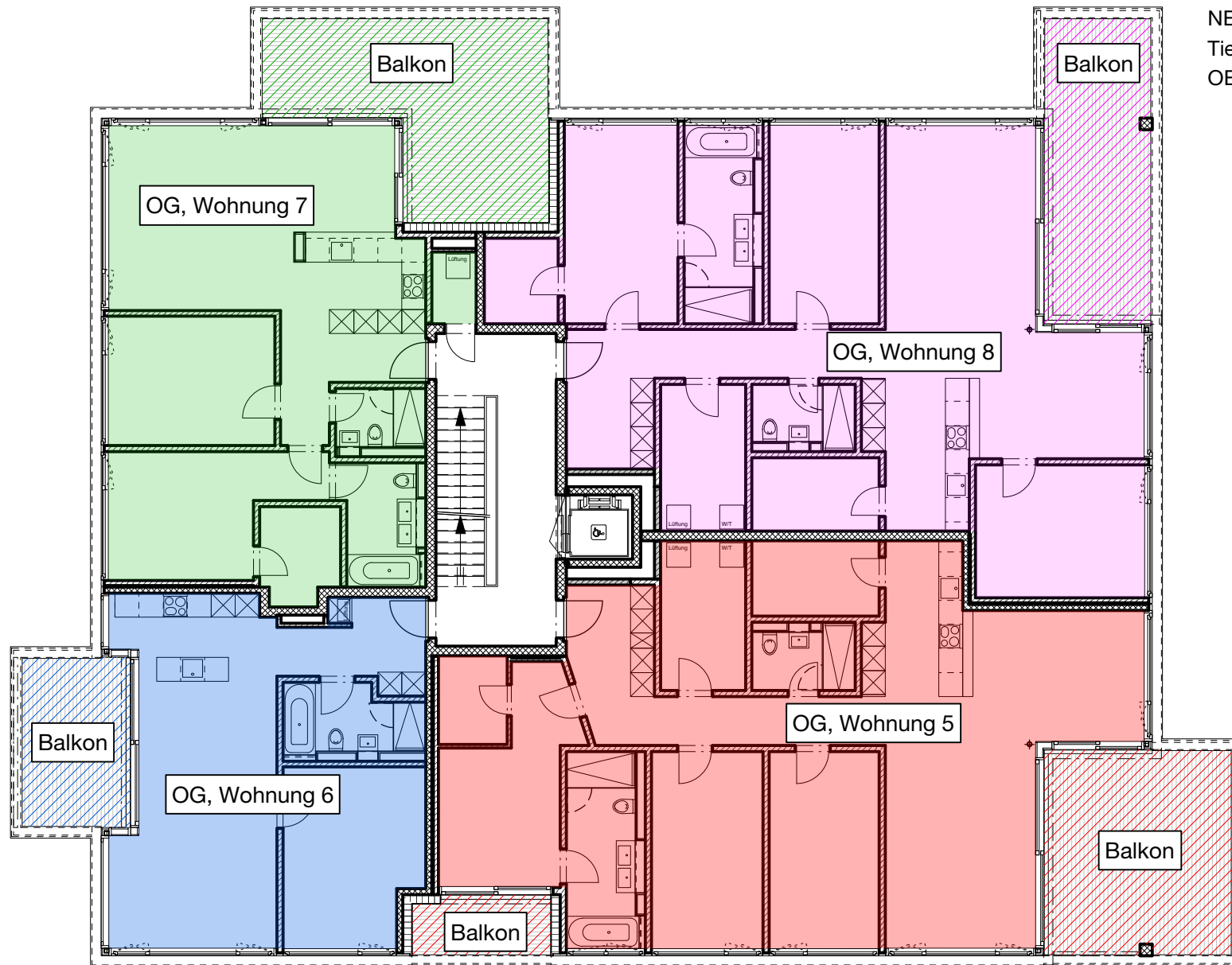


m | 1 | 2 | 3 | 4 | 5

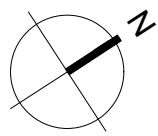


03.08.2016

NEUBAU MFH TIEFENHOF
Tiefenhofstr. 18, Wädenswil
OBERGESCHOSS



m | 1 | 2 | 3 | 4 | 5



03.08.2016