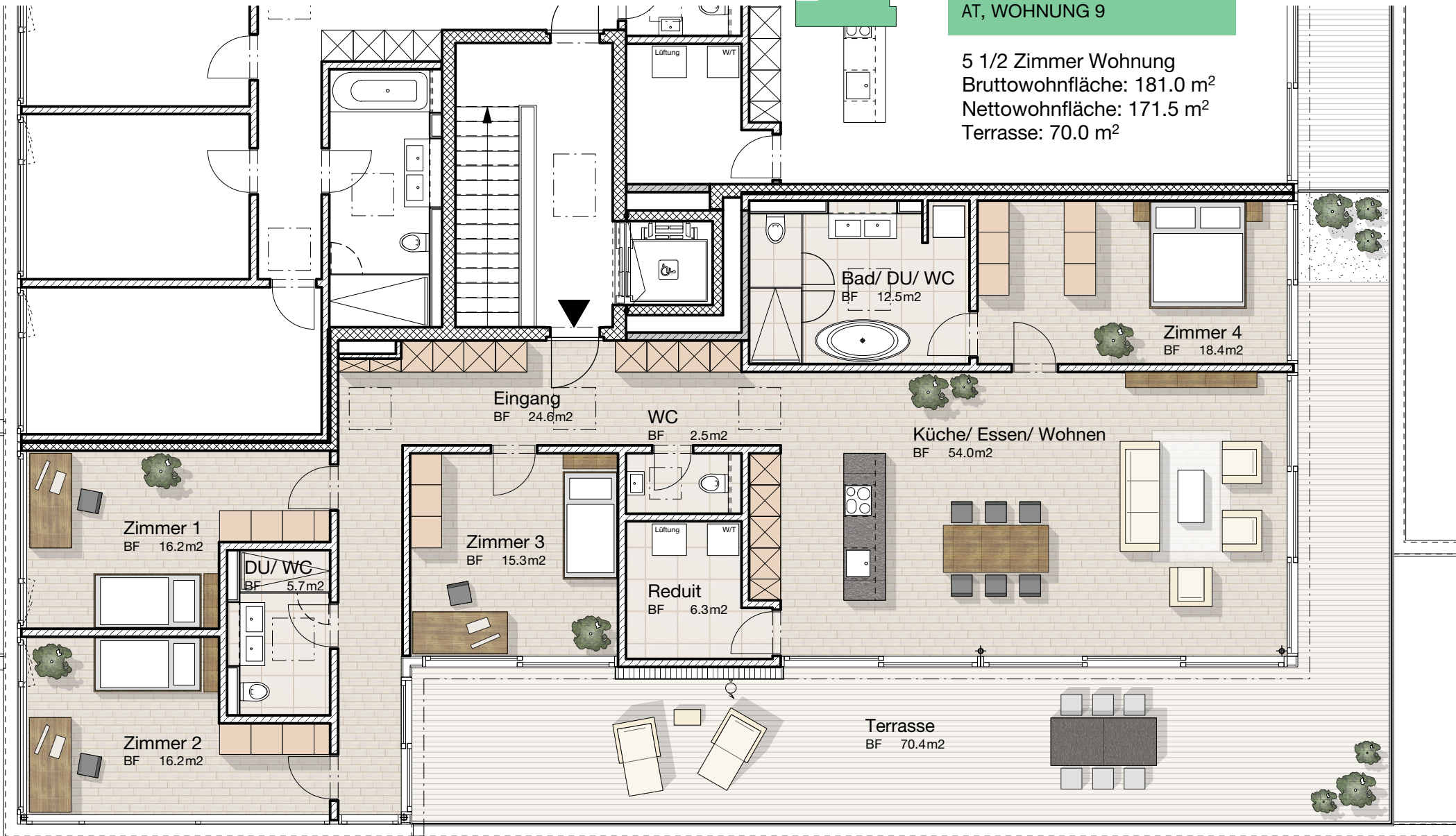
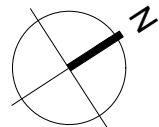


NEUBAU MFH TIEFENHOF
Tiefenhofstr. 18, Wädenswil
AT, WOHNUNG 9

5 1/2 Zimmer Wohnung
Bruttowohnfläche: 181.0 m²
Nettowoohnfläche: 171.5 m²
Terrasse: 70.0 m²

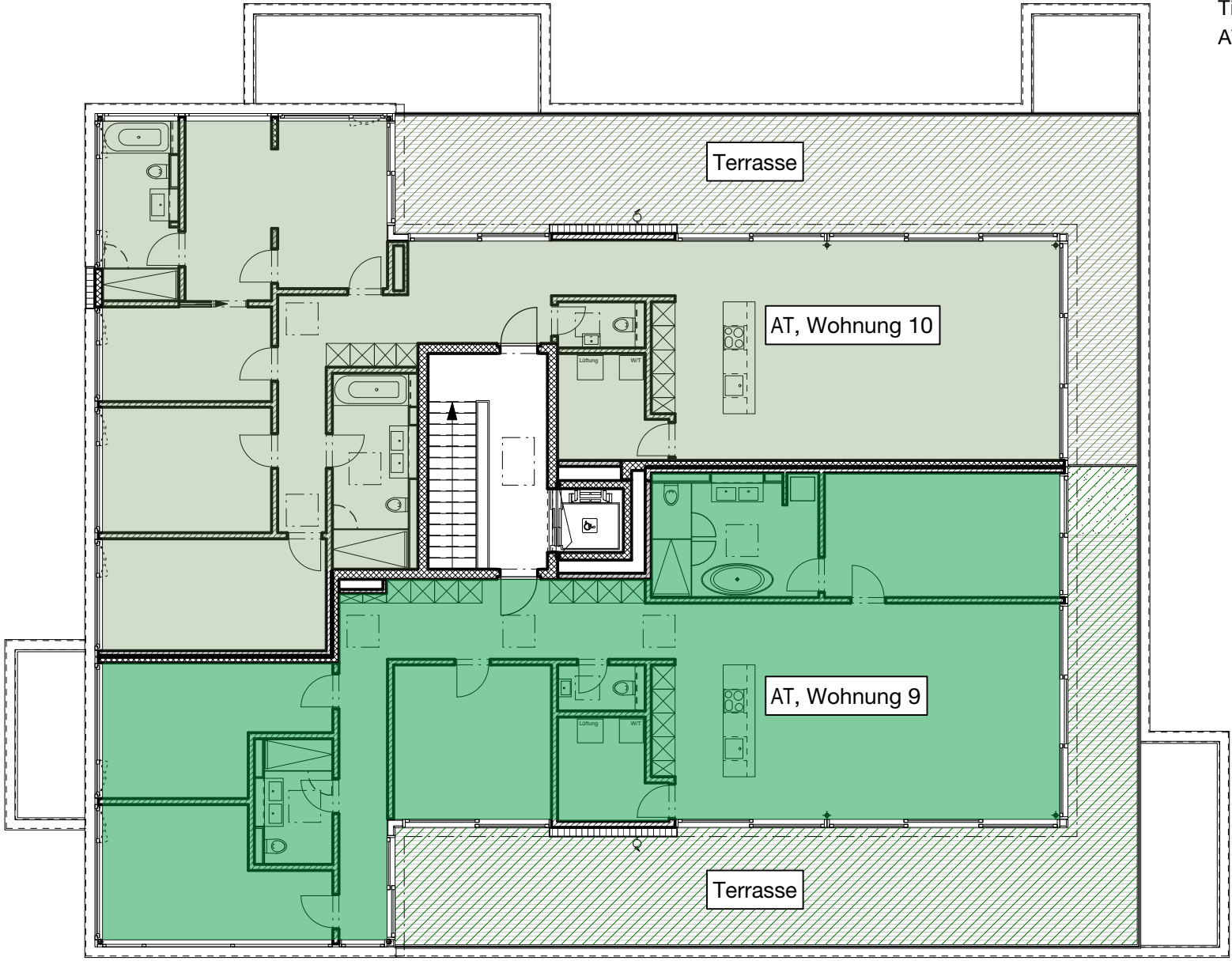


m | 1 | 2 | 3 | 4 | 5

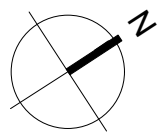


03.08.2016

NEUBAU MFH TIEFENHOF
Tiefenhofstr. 18, Wädenswil
ATTIKA



m | 1 | 2 | 3 | 4 | 5



03.08.2016